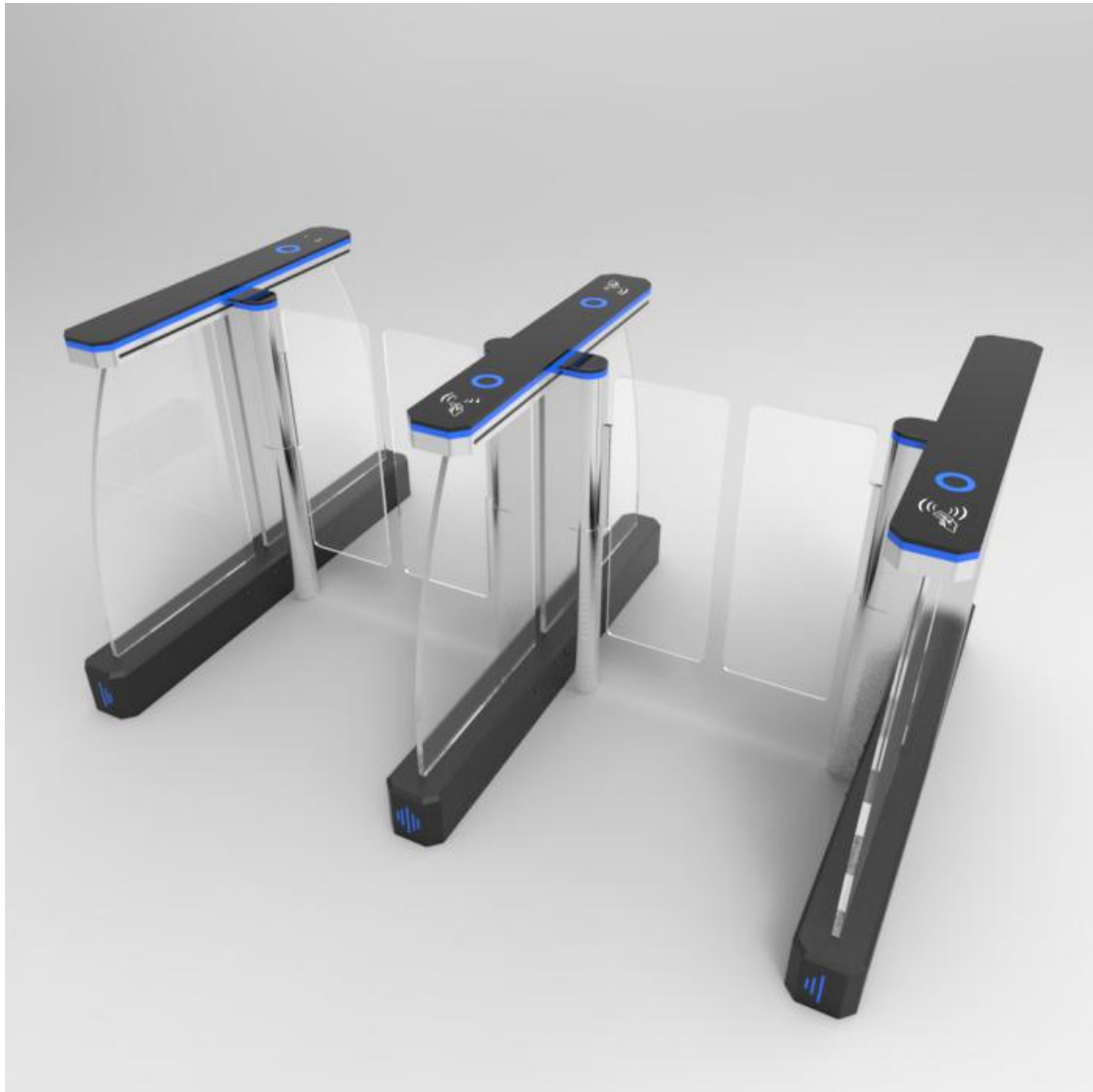


Shenzhen Tongdazhi Technology Co., Ltd

TDZ-B239S

Servo motor speed gate



Product Description

Intelligent speed gate turnstile TDZ-B238S is transparent. bright. simple and elegant, The housing material is made of 304# stainless steel with 2.0mm thickness, The mechanism modules are servo motor and precise position encoder, make sure the speed gate can rotate quickly. quietly. stably and accurately, with low-power consumption. energy conservation and environment protection

Feature

- ❖ By using 6 pairs of military level high-performance infrared sensors and exact algorithms. It can accurately detect the user's passing position to achieve the purpose such as anti-tailing. Anti-reverse passing and anti-clamping etc.
- ❖ Using the multiple anti-clamping designs to protect the personal safety of passengers in maximum limit
- ❖ The widen lane is optional for carrying luggage and wheelchair access.
- ❖ Equipped with the dry contact signal input interface, compatible with all kinds of access controllers.
- ❖ It will alarm when break in illegally, followed by people,passed overtime,damaged for equipment.
- ❖ After swiping card in normal condition, if within the permitting time passages do not pass, the system will cancel the users' pass right and arm close automatically
- ❖ Arm automatically open when the power off to make sure safety In case of emergency
- ❖ Optional for external counter to record the people numbers for each lane

Occasion Application

Suitable for commercial buildings, subways, airports, customs, exhibition halls, government buildings, financial institutions, clubs and other high-end indoor applications.

Parameters

Structure parameters	
Housing material	304 grade stainless steel
Thickness	2.0mm
Surface treatment	Brushed finish
Arm material	Acrylic
Technical parameters	
Size	1400*150*1000mm
Lane width	550--900mm
Passing speed	35--50 people/min
Open/close speed	0.1--0.6sec
Weight	60KG
Turning angle	90 degree
infrared sensors	6 pairs

MCBF	10.000.000 times
Application	Indoor or outdoor
Rotating directional	Single way or Bi-directional adjustable
Noise	<55db
Operating temperature	-15 to 70℃
Relative humidity	5% to 95%
Package	Carton box inside. Wooden case outside
Electronic parameters	
Power supply	110-220V/AC, 50/60HZ
Rated power	100W
Input signal	Dry contact
Driving motor	Servo Motor with reducer
Method of position	Encoder to make sure accurate position

Basic Function

- ✧ The entry and exit directional can be set independently, free mode / forbidden model
- ✧ Automatic reset function: The speed gate will open the arm after receiving the valid opening signal when standby. The speed gate will return to the hindered zero position automatically under the following situation:
 - . Within the allowed time, pedestrians have been detected to pass through the passageway in specified direction;
 - . Over the allowed time, there is no people passing through the passageway.
- ✧ Self-recovery function: The speed gates do not return to the hindered zero position because of human intervention. After revoking human intervention, the gate automatically return to the hindered zero position.
- ✧ Direction indicator: The direction indicator is installed on the top of the housing cabinet to indicate the valid passing direction
- ✧ Compatibility: Equipped with dry contact signal input interface can make sure compatible with all kinds of access controllers

Security Design

- Self-check function when power on: The system will self-check routinely and alarm when the power is on, and intelligently detect the key hardware and function. Find the hidden danger within the shortest time!
- Open gate when power off: Adopt the leading mechanical structure by original creation; the system will open the gate automatically when power off or manually push the gate to be open so as to evacuate people conveniently, which meets the firefighting requirement.
- Anti-clamping function
 - . Infrared anti-clamping: Once people or some thing is detected in the anti-clamping area, the speed gate will automatically stop moving; until the people or some thing leaves the anti-clamping area, the swing gate will continue to move.
 - . Machinery anti-clamping: The swing gate will automatically stop moving when it encounters obstacles, the impulse force is within the safety range when the swing gate is moving.

- Anti-collision function: When the speed gate is locked, it can support the impulse force within the safety range. The gate can be manually pushed slowly when the impulse force is over the safety range, so as to protect the mechanism. After revoking human intervention, swing gate automatically return to the hindered zero position.
- Emergency escape function: Equipped with emergency escape control device, the system can automatically open the gates to evacuate pedestrians, which is convenient.

Customized Function:

- Built-in or external counter
- External gate open button or remote controller
- 316 grade stainless steel. Thickness of the material
- Lane width can be made based on the requirement
- Arm material organic glass, tempered glass, acrylic
- Integrate with access control system and built-in reader appointed by customers.